



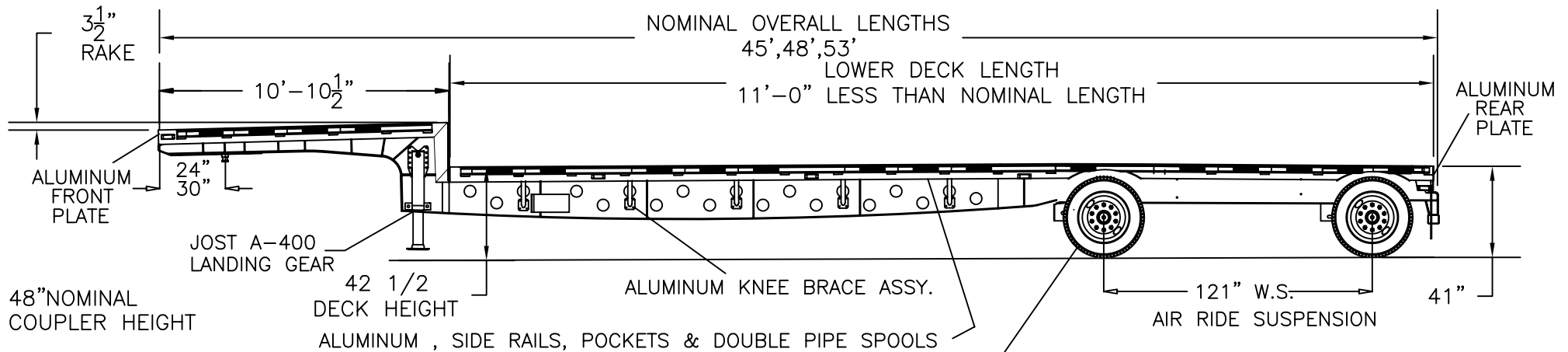
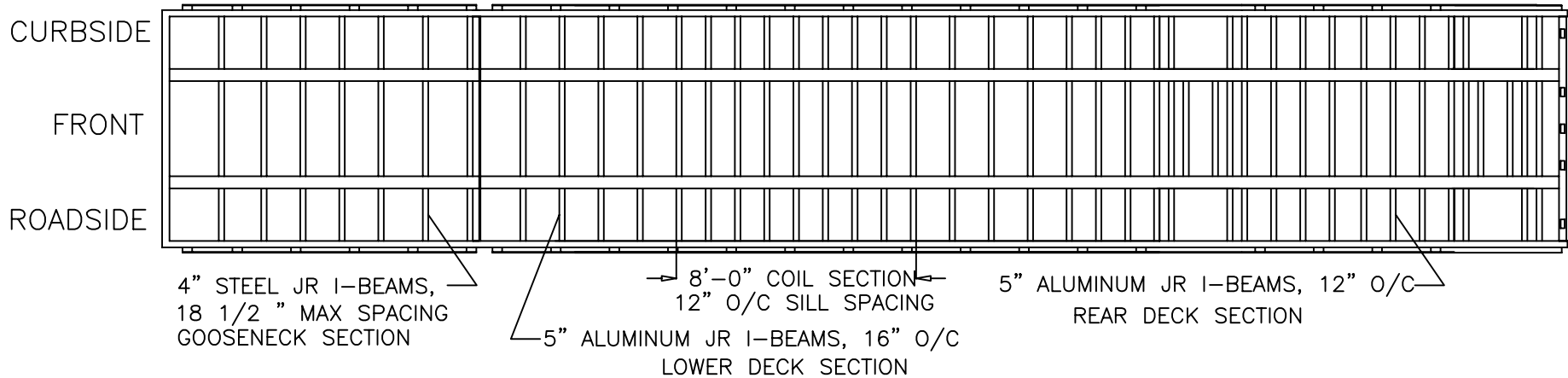
**Transcraft®**  
**D-Eagle**

## D-Eagle Standard Specifications

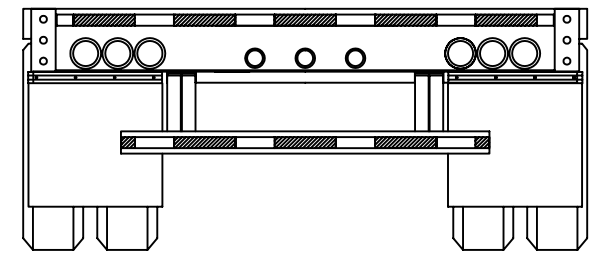
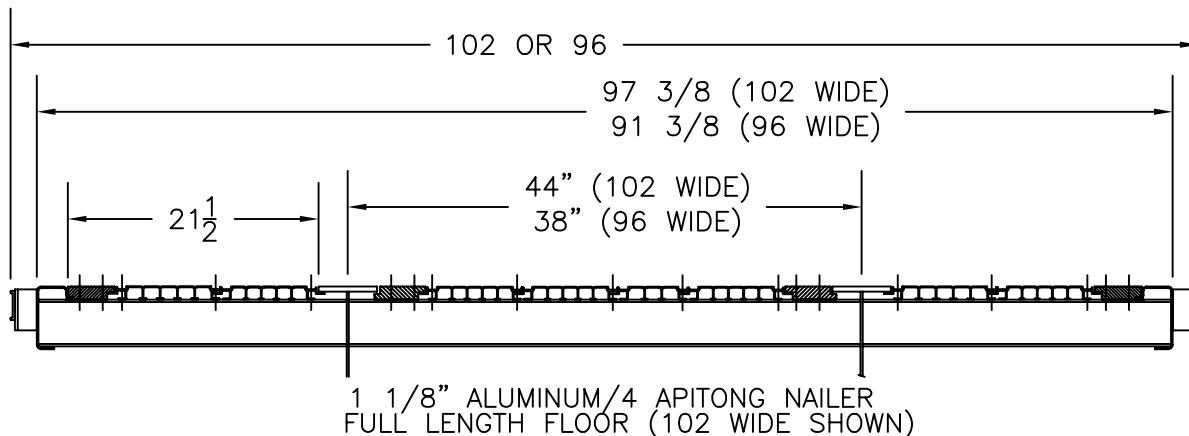
<b>Front Plate</b>	High Strength Aluminum 6 1/2" deep, square corners, no stake pockets.
<b>Rear Plate</b>	1/4" Thick High Strength Extruded Aluminum, 13" deep boxed section with internal stake pockets and recessed lights with back fully enclosed. 11 1/4" deep extra heavy duty rubber dock bumpers along with a 4" x 5" tubing bumper and heavy duty bracing provide maximum protection for the rear of the trailer. NOTE: 96" wide trailers will have a hi-tensile steel rear plate.
<b>5th Wheel Plate</b>	SAE King pin @ 30" location, 1/4" skid plate tapers up front for easy pickup. 24" or 36" location optional.
<b>Main Beam</b> (Lightening holes in web)	Built for maximum payload with a beam capacity of 60,000# in 10' or 55,000# in 4'. Assembled with heat treated 130,000# yield strength flanges and high tensile steel webs. GVWR 80,000# 3/8" x 5" 130K Top Flanges, 1/2" x 5" 130K Bottom Flanges, 3/16" Center, & 1/4" G.N. & Rear Web
<b>Upper Frame</b>	5" high strength extruded aluminum sills from drop to rear. 4" 80,000 psi yield strength steel sills in the gooseneck and kingpin area. 16" o/c lower deck with 12" o/c in coil and suspension area
<b>Lower Frame</b>	Aluminum Pipe Braces as required running from bottom of sills to main beams with crossmembers between beams from landing gear to rear on approximately 2' centers.
<b>Side Rail</b>	6 1/2" Aluminum Side Rail, 5/16" thick stake pockets, 1 5/8" x 3 1/2" x 4" Deep, 24" O/C, 3/8" x 3" rubrail with recess for reflective tape, 2" alum. double spools.
<b>Landing Gear</b>	Premium Jost A400(5 Yr. Zero Maintenance) gear, 160,000# static load rated legs with 10" x 10" square cushion foot.
<b>Suspension</b>	Hendrickson AANL 23k INTRAAX® Airide with "Quick-Align" feature. Suspension set at rear most position.

<b>Axles</b>	Integral axle, extended service brake linings, "P" Spindle, Gunite Automatic Slack Adjusters. Type 3030 spring brakes.
<b>Hub, Brake Drum, &amp; Wheels</b>	8.25-22.5 hub piloted 10 hole steel disc painted white. Cast hubs, outboard mounted cast drums.
<b>Brakes</b>	Premium Extended Service Brake lining, 16.5 x 7" with anti-lock braking sensors on every wheel. Meritor Wabco 4S2M ABS is used for maximum brake life and virtual elimination of flat spotted tires.
<b>Electric</b>	Male pin connectors to all lights with double seals. Locked in place with a positive retention pin to eliminate the biggest reason for wiring problems - loose connections. All required splices are sonic welded. All wires are double insulated in a sealed loom with molded double seals. This system was designed for Transcraft by USA Harness.  Exclusive Grote male pin connection <u>LED lights are standard</u> for a total lifetime, trouble free, electrical system with a 5 year warranty on materials and labor. This system includes 25 lights, 2 on front, 5 on each side, 2 large 4" mid wide turn lights, 6 combination 4" rear lights, 3 round identification lights, ABS lamp, and an incandescent license light. There is a simple plug-in provision for accessory power.
<b>Floor</b>	1 1/8" Aluminum interlocking planks with 4 Apitong nailers.
<b>Paint</b>	Steel components are cleaned, phosphatized, and primed with a 2-part universal primer, then painted with a 2-part black urethane. Aluminum components are natural.
<b>Reflective Tape</b>	The highest quality 3M reflective tape is installed in the recess of the rubrail for protection, throughout the trailer and on the rear cross tube of bumper.
<b>Tires</b>	255/70R22.5 General ST250LP

10' Beam Capacity		4' Beam Capacity	
49" Axle Spacing	121" Axle Spacing	49" Axle Spacing	121" Axle Spacing
55,000#	60,000#	50,000#	55,000#



STANDARD TIRES 255/70R22.5  
36.6 INCH DIAMETER



THE FOLLOWING TOLERANCES  
APPLY TO ALL DIMENSIONS  
UNLESS OTHERWISE SPECIFIED  
FRACTIONAL: +/- 1/2"  
DECIMAL: +/- .005"

*Transcraft*

DR. BY: SMG	NAME: D-EAGLE	REV H
WEIGHT:	DATE: 08-18-00	P/N: S-148360
		SHEET 1 OF 1